



Planting Project Application

Note to applicants: within six months of approval of your application, you must submit the following documents to City Forest Credits (the "Registry"):

Project Design Document

Declaration of Ownership of Land (where the Project Operator owns the land where project trees are planted).

Or, Agreement to Transfer Potential Credits (signed by the property owner if Project Operator does not own the land upon which project trees are planted)

Project Implementation Agreement with the Registry

Short Name of Your Project (include city, town, or county name, and whether this is a planting or preservation project. For example, Shoreline, WA Ballinger Open Space Planting Project)

Treasure Valley, Idaho Municipal Parks Planting Project

Project locations in Boise, Meridian, and Nampa

Is this a planting project, preservation project, or both?

Planting Project Preservation Project

Name of City, Town, or County where project is located

Planting Projects are located within 6 municipal parks in 3 cities: Boise, Meridian, and Nampa, ID

- **Ada County**
 - Boise
 - Franklin Park: 310 Hilton Street, Boise, ID 83705
 - Pine Grove Park: 8995 W Shoup Dr, Boise, ID 83709
 - Sterling Park: 9851 W Irving St, Boise, ID 83704

- Meridian
 - South Meridian Regional Park (Discovery Park): 2121 East Lake Hazel Rd, Meridian, ID 83642
 - Hillsdale Park: 5155 Howry Lane, Meridian, ID 83642
- Canyon County
 - Nampa
 - Orah Brandt Park: Franklin Boulevard and Cherry Lane, Nampa, ID 83687

Name of Project Operator (can be more than one)

Treasure Valley Canopy Network (www.tvcanopy.net)

Contact Information for Project Operator

Lance Davisson, Network Coordinator
Ecosystem Sciences Foundation ATTN: TV Canopy Network
202 N 9th Street, Suite 400
Boise, Idaho, 83702

Give a 1-2-paragraph description of your project. This will be visible to the public on your project page on the Registry.

The Treasure Valley Municipal Parks Planting Project is a partnership between the cities of Boise, Nampa, Meridian and the Treasure Valley Canopy Network (Network). This project will plant approximately 600 trees in 6 municipal parks throughout the Treasure Valley. See Figure 1 below.

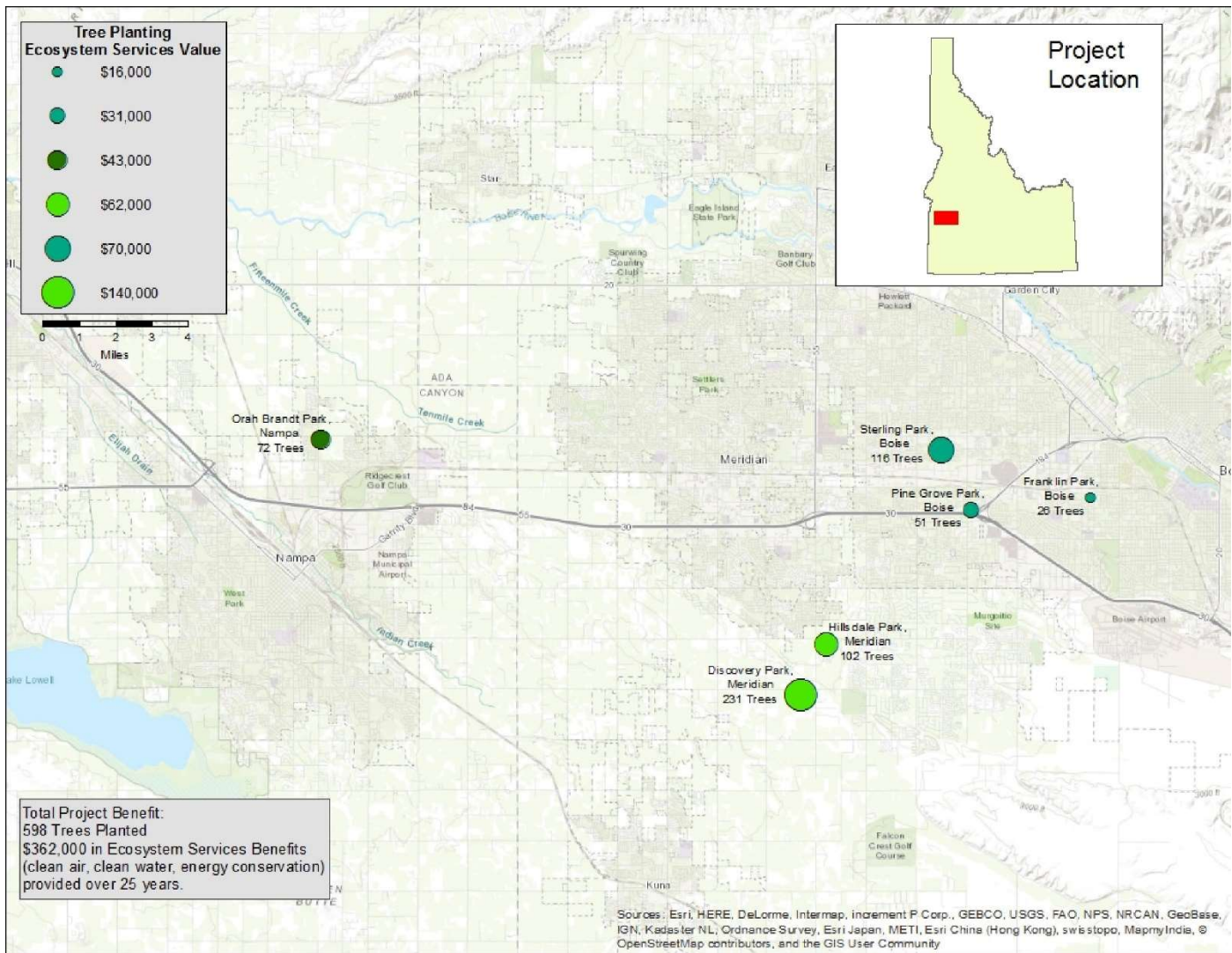


Figure 1: Vicinity Map

The Cities of Boise, Nampa and Meridian are at the heart of Idaho’s Treasure Valley, one of the fastest growing metropolitan areas in the United States. As our region grows, its cities are committed to building healthy and vibrant public spaces for all citizens to enjoy.

Optional: Describe or list the benefits of your project. These benefits could be equity for underserved or disadvantaged communities, flood control, open space preservation, watershed protection, human health, bird or wildlife habitat, etc. This will be visible to the public on your project page on the Registry website.

The trees planted in these parks will provide residents of various socioeconomic categories with recreational opportunities resulting in healthier environments and people. Over the next 25 years, these trees will provide over \$360,000 in ecosystem services that will benefit our region’s environment and its citizens. Over the next 50 years, the trees could provide almost \$700,000 in rainfall interception, energy savings, air quality improvements, and storage of CO2.

Does your project fall within an Urban Area mapped by the U.S. Census Bureau, or within the boundaries of a city or town? For the Census Bureau maps, see <https://www.census.gov/geo/maps-data/maps/2010ua.html>.



Within an Urban Area



Within a city or town

Add any optional information you choose. This may include: What are the goals of the project? Will you be working with other stakeholders? This will be visible to the public.

This project is the first pilot in the Treasure Valley City Forest Credits Program, administered by the Treasure Valley Canopy Network. As the Network continues to build collaborative partners and planting projects, we anticipate many more opportunities for financial support of our regional City Forest Credits Program.

The Network is soliciting a project sponsor interested in purchasing over 1,300 City Forest Carbon+ Credits valued at approximately \$50,000. Funds generated from this project will be used to support future municipal tree planting projects throughout the Treasure Valley.